

List of Tables and Charts
Bolstering and Diversifying the New York City Economy
James Parrott
Fiscal Policy Institute
December 2, 1999

This paper, which is part of the series Rethinking the Urban Agenda, sponsored by The Century Foundation and the Center for Urban Research at CUNY Graduate Center, is posted with permission of The Century Foundation. Copyright © 2000 by The Century Foundation, Inc./Twentieth Century Fund, Inc., all rights reserved.

Tables

1. New York City Employment by Major Industry Sector, 1989-99
2. New York City Wages by Major Industry, 1989-98
3. Immigrants by Year of Admission, New York City, 1950-96
4. Change in New York City Population by Racial/Ethnic Group, 1990-98
5. New York City's Economic Strength in the 1990s Match the 1980s
6. Employment Levels, Northeast and Midwest CMSAs, 1992-98
7. Wall Street's Disproportionate Share of Earnings Growth, New York City, 1980s and 1990s
8. Decile Wages, United States and New York State, 1989-1998
9. Growth in "Top-to-Bottom" Wage Inequality, New York City Metropolitan Area and Upstate New York, 1979-96
10. Average Income by Quintiles, Families with Children, 1970s, 1980s and 1990s

Figures

1. Nonagricultural Employment, New York City, January 1959-June 1999
2. Annual Change in New York City's Population and Population Components, 1990-98
3. Unemployment Rate, New York City and US, January 1978-June 1999
4. Percent of Population Below Poverty Level, 1968-98
5. Growth in Number of Working Poor Families, United States, New York State, and New York City

Table 1. New York City Employment by Major Industry Sector, 1989-99

	Employment		Employment Share		Absolute Change	Percent Change
	1989	Est. 1999	1989	Est. 1999	1989-99	1989-99
Goods Production, Transportation and Wholesale Distribution	783,300	621,900	22.2%	17.7%	-161,400	-20.6%
FIRE	520,400	480,400	14.7%	13.7%	-40,000	-7.7%
Corporate Services	230,100	265,600	6.5%	7.6%	35,500	15.4%
Information Services	196,100	222,900	5.6%	6.4%	26,800	13.7%
Entertainment, Culture and Tourism	238,800	277,800	6.8%	7.9%	38,900	16.3%
Health and Social Services	365,500	480,700	10.3%	13.7%	115,200	31.5%
Other Services	339,100	344,400	9.6%	9.8%	5,400	1.6%
Retail Trade Except Eating and Drinking Establishments	264,400	254,400	7.5%	7.3%	-10,100	-3.8%
Government	582,600	542,000	16.5%	15.5%	-40,700	-7.0%
Total	3,532,900	3,507,000	100.0%	100.0%	-25,900	-0.7%

Source: New York State Department of Labor, 1999 employment estimated using percent change from Sept. 1998-99.

Table 2. New York City Wages by Major Industry Sector, 1989-98

	Real Average Wages		Share of Total Wages		Real Wage Change
	1989	1998	1989	1998	1989-98
Goods Production, Transportation, and Wholesale Distribution	\$43,734	\$47,386	22.6%	16.4%	8.4%
FIRE	\$66,383	\$115,761	22.8%	31.0%	74.4%
Corporate Services	\$52,660	\$59,400	8.0%	8.3%	12.8%
Information Services	\$59,941	\$74,755	7.8%	8.9%	24.7%
Entertainment, Culture and Tourism	\$26,760	\$29,595	4.2%	4.4%	10.6%
Health and Social Services	\$32,882	\$33,918	7.9%	9.0%	3.2%
Other Services	\$28,250	\$30,256	6.3%	5.7%	7.1%
Retail Trade Except Eating and Drinking Establishments	\$25,209	\$24,460	4.4%	3.4%	-3.0%
Government	\$40,719	\$42,301	15.7%	12.8%	3.9%
Total	\$42,858	\$52,009	100.0%	100.0%	21.4%

Source: New York State Department of Labor

Table 3. Immigrants by Year of Admission, New York City, 1950-96

Year	Total	Annual Average	Percent Change
1950-59	470,597	47,060	
1960-69	575,570	57,557	22.3%
1970-79	783,248	78,325	36.1%
1982-89	684,819	85,602	9.3%
1990-94	562,988	112,598	31.5%
1995-96	231,373	115,687	2.7%

Source: "The Newest New Yorkers 1990-1994: An Analysis of Immigration to New York City in the Early 1990s", 1996; "The Newest New Yorkers 1995-1996: An Update of Immigration to NYC in the in the Mid 90s", 1999; New York City Department of Planning.

Table 4. Change in New York City Population by Racial/Ethnic Group, 1990-98

	Population 1990	Population 1998	Population Share 1998	Absolute Change In Population 1990-98	Percent Change In Population 1990-98
Total Population	7,321,713	7,420,166	100.0%	98,453	1.3%
White, Non-Hispanic	3,156,643	2,801,223	37.8%	-355,420	-11.3%
Black, Non-Hispanic	1,808,536	1,795,986	24.2%	-12,550	-0.7%
Hispanic	1,793,786	2,068,702	27.9%	274,916	15.3%
Asian and Pacific Islander	532,117	719,478	9.7%	187,361	35.2%
American Indian	30,631	34,777	0.5%	4,146	13.5%

Source: U.S. Bureau of the Census.

**Table 5. New York City's Economic Strengths in the 1990s
Match the 1980s**

	Average Annual Rates of Change		
	1982-88	1988-92	1992-99
Real Gross City Product	3.9%	-0.2%	3.9%
Real Personal Income	3.7%	1.0%	2.8%
Real Total Wages	3.8%	-1.1%	3.8%
Total Employment	1.3%	-2.3%	1.3%

Source: New York City Office of Management and Budget

Table 6. Employment Levels, Northeast and Midwest CMSAs 1992-98

(thousands, seasonally adjusted)

Employment	US	New York	Boston	Chicago	Cleveland	Detroit	Milwaukee	Philadelphia
1992	108,591	8,563	2,694	3,976	1,327	2,260	835	2,613
1998	125,803	9,284	3,095	4,495	1,476	2,564	927	2,868
1992-98 Average Annual Percent Change	2.48%	1.36%	2.34%	2.07%	1.79%	2.12%	1.75%	1.56%

Source: U.S. Bureau of Labor Statistics

**Table 7. Wall Street's Disproportionate Share of Earnings Growth
New York City, 1980s and 1990s**

	1998 Job Share	1983-89 Share of Real Earnings* Change	1992-98 Share of Real Earnings* Change
Export	39.1%	58.4%	86.6%
Securities	4.7	16.6	45.1
Business Services	8.1	11.5	12.7
Other Finance	5.6	-1.1	10.8
Culture & Media	5.2	9.6	8.1
Professional Services	5.2	21.2	8.1
Banking	3.4	5.5	2.0
Hotels	1.0	0.7	1.0
Manufacturing	5.9	-5.6	-1.1
Local	45.0	26.3	12.7
Health Services	9.0	9.7	3.4
Retail Trade	11.3	2.6	2.8
Construction/Mining	2.9	5.9	2.4
Social Services	4.5	3.0	0.9
Other Services	6.9	6.3	2.9
Wholesale Trade	5.4	2.1	0.5
Transportation	5.0	-0.8	-0.1
Private	84.1	84.7	99.3
Government	15.9	15.4	0.7
Total, all industries	100%	100%	100%

* Earnings equals wages and salaries plus proprietors' income.

Source: Office of the State Deputy Comptroller for New York City

Table 8. Decile Wages, United States and New York State, 1989-98
(1998 dollars)

Population Decile	1989 Decile Wage		1998 Decile Wage		1989-98 Decile Wage Change	
	New York State	United States	New York State	United States	New York State	United States
1	\$6.28	\$5.47	\$5.84	\$5.84	-7.00%	6.76%
2	\$7.75	\$6.81	\$7.21	\$7.05	-6.98%	3.52%
3	\$9.40	\$8.17	\$8.64	\$8.26	-8.09%	1.10%
4	\$11.03	\$9.77	\$10.20	\$9.82	-7.51%	0.51%
5	\$13.12	\$11.35	\$12.26	\$11.29	-6.56%	-0.53%
6	\$15.32	\$13.25	\$14.65	\$13.27	-4.36%	0.15%
7	\$17.75	\$15.77	\$17.37	\$15.78	-2.15%	0.06%
8	\$21.13	\$18.86	\$21.12	\$19.02	-0.06%	0.85%
9	\$26.71	\$23.83	\$28.20	\$24.93	5.57%	4.62%

Source: CPS data analyzed by Economic Policy Institute, deflators applied by FPI.

Table 9. Growth in Top-to-Bottom Wage Inequality, New York City Metropolitan Area and Upstate New York, 1979-96

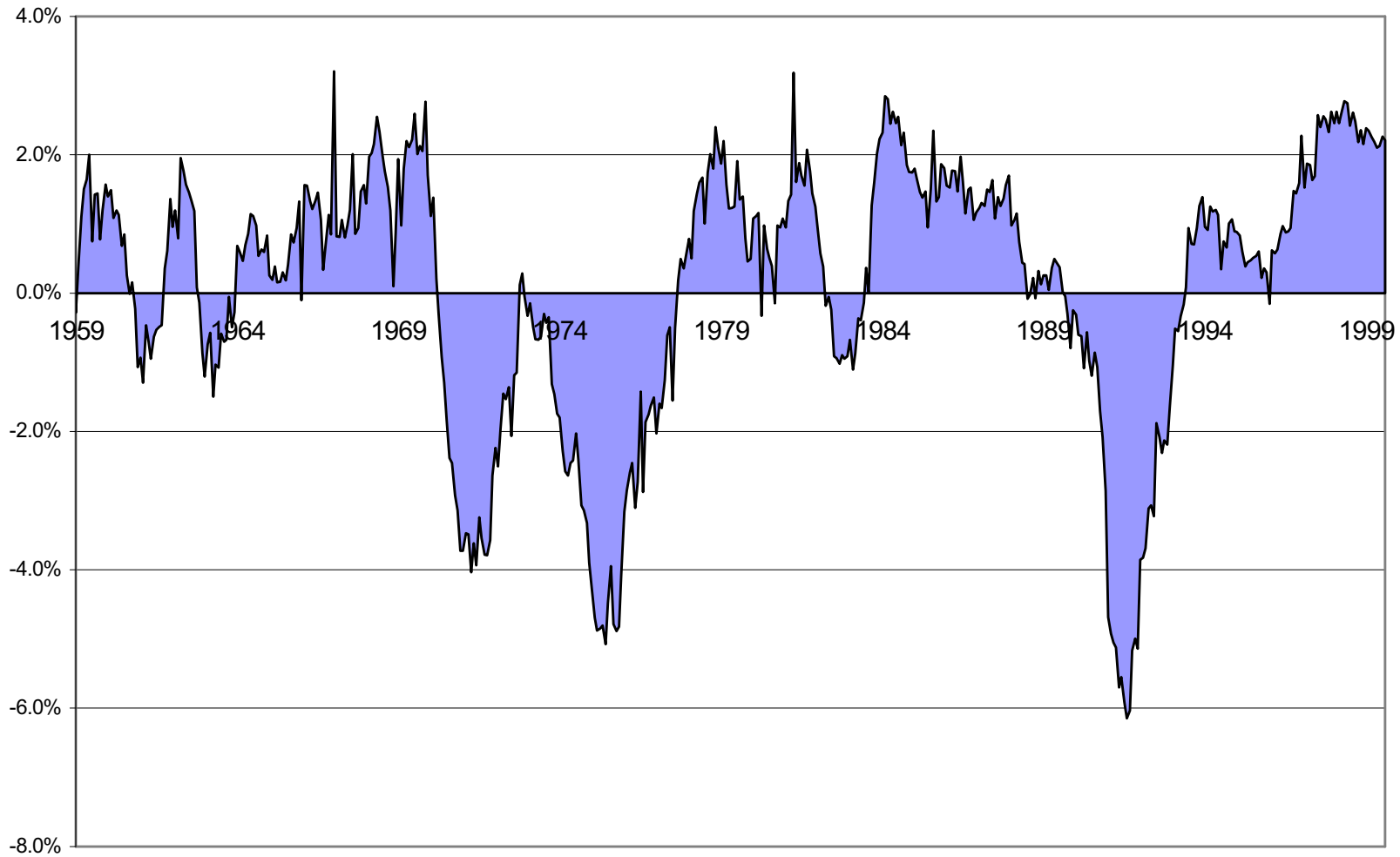
	Ratio of 90th Percentile Wage to 10th Percentile Wage					
	Men			Women		
	1979	1989	1996	1979	1989	1996
United States	3.6	4.6	5.0	2.9	3.9	4.3
Upstate New York	3.3	3.6	4.3	2.5	3.5	3.6
New York City Metro Area	3.7	4.6	6.8	3.0	4.0	4.8

Source: David Brauer, Beethika Khan, and Elizabeth Miranda, "Earnings Inequality: New York-New Jersey Region," Federal Reserve Bank of New York, Current Issues in Economics and Finance, July 1998.
Based on data from the Bureau of the Census, March CPS.

**Table 10. Average Income by Quintile, Families With Children
1970s, 1980s and 1990s
And Change from Late 1970s and Late 1980s**
(1997 dollars)

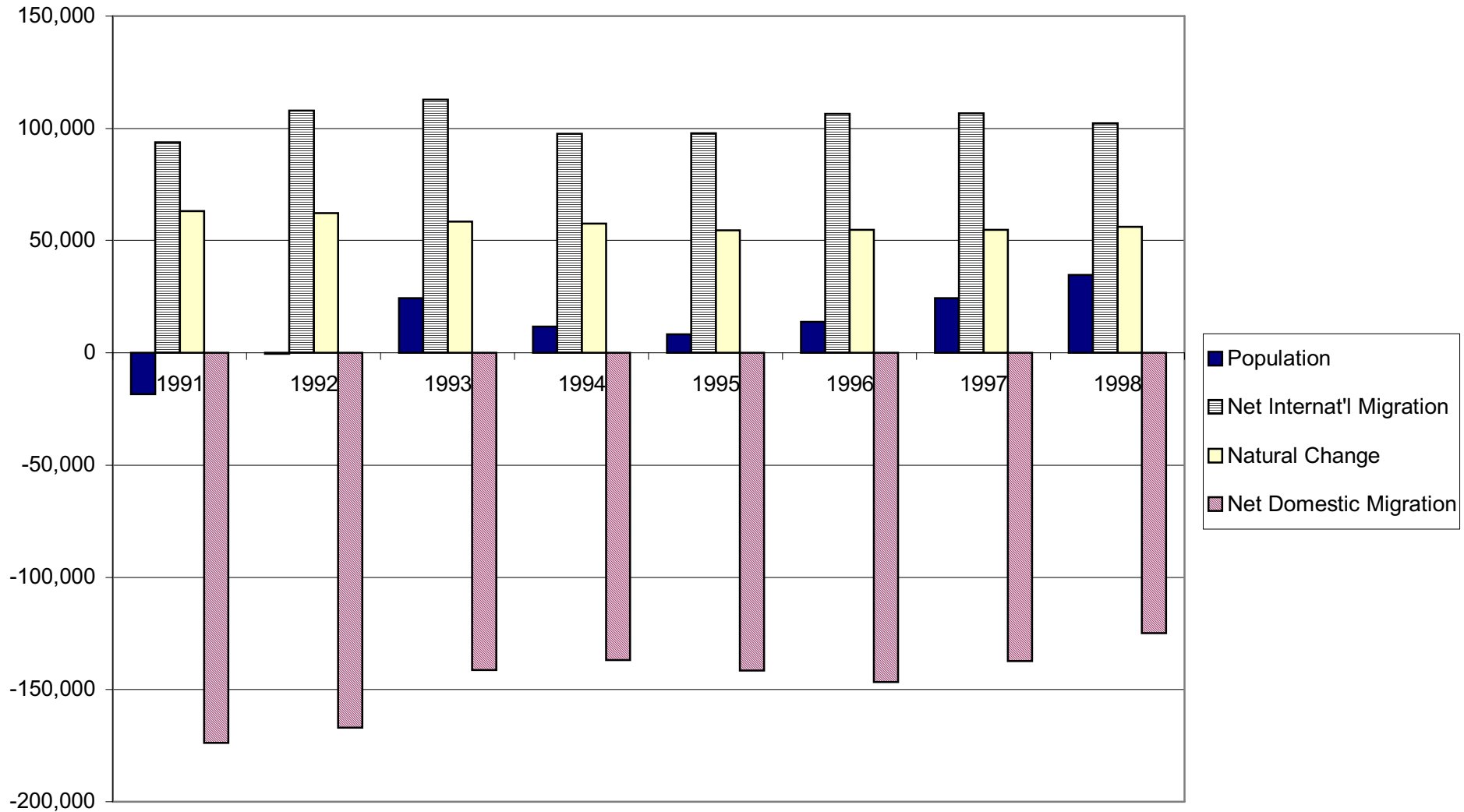
New York City	Average Family Income			change		change		change	
	1977/79	1987/89	1995/97	1970s to 1980s		1980s to 1990s		1970s to 1990s	
Bottom Quintile	\$8,507	\$5,741	\$4,643	-\$2,767	-33%	-\$1,098	-19%	-\$3,864	-45%
Second	\$16,724	\$16,505	\$13,469	-\$219	-1%	-\$3,037	-18%	-\$3,256	-19%
Middle	\$28,326	\$32,291	\$26,187	\$3,964	14%	-\$6,103	-19%	-\$2,139	-8%
Fourth	\$43,605	\$51,015	\$45,493	\$7,410	17%	-\$5,522	-11%	\$1,888	4%
Top	\$78,761	\$95,591	\$115,395	\$16,830	21%	\$19,804	21%	\$36,634	47%
New York State	Average Family Income			change		change		change	
	1977/79	1987/89	1995/97	1970s to 1980s		1980s to 1990s		1970s to 1990s	
Bottom Quintile	\$11,132	\$8,411	\$7,116	-\$2,722	-24%	-\$1,294	-15%	-\$4,016	-36%
Second	\$25,615	\$25,883	\$22,393	\$269	1%	-\$3,490	-13%	-\$3,222	-13%
Middle	\$39,973	\$42,999	\$39,604	\$3,025	8%	-\$3,395	-8%	-\$369	-1%
Fourth	\$54,748	\$62,842	\$61,658	\$8,094	15%	-\$1,183	-2%	\$6,910	13%
Top	\$90,568	\$112,023	\$144,570	\$21,455	24%	\$32,547	29%	\$54,002	60%
United States	Average Family Income			change		change		change	
	1977/79	1987/89	1995/97	1970s to 1980s		1980s to 1990s		1970s to 1990s	
Bottom Quintile	\$12,174	\$9,720	\$9,543	-\$2,454	-20%	-\$178	-2%	-\$2,632	-22%
Second	\$28,109	\$26,089	\$25,416	-\$2,020	-7%	-\$673	-3%	-\$2,693	-10%
Middle	\$41,500	\$41,818	\$41,709	\$318	1%	-\$109	0%	\$209	1%
Fourth	\$55,923	\$59,611	\$61,443	\$3,688	7%	\$1,832	3%	\$5,521	10%
Top	\$90,836	\$102,949	\$126,227	\$12,114	13%	\$23,278	23%	\$35,392	39%

**Figure 1. Nonagricultural Employment, New York City
January 1959-June 1999 Percent Change from Prior Year
(seasonally adjusted)**



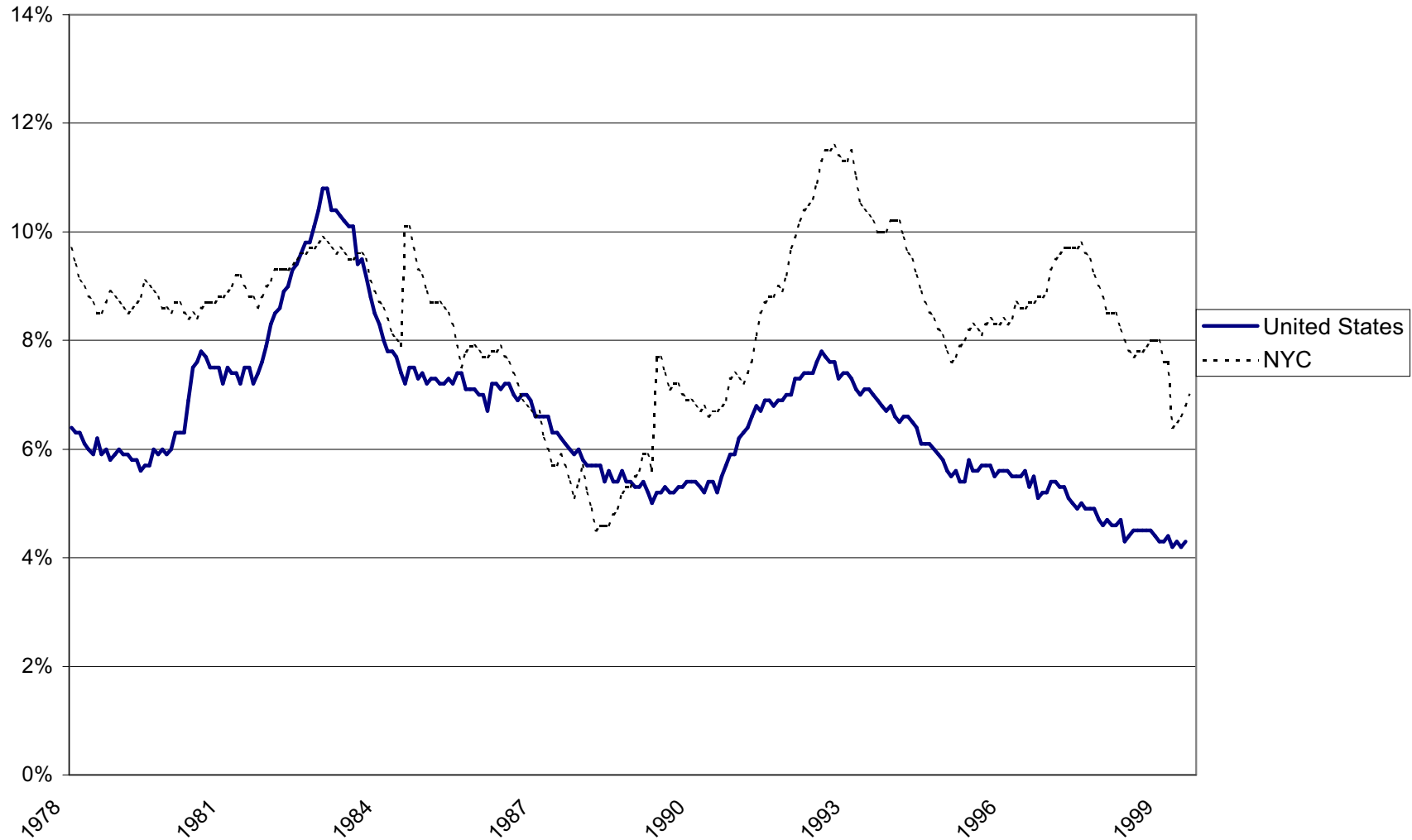
Source: New York State Department of Labor

Figure 2. Annual Change in New York City's Population and Population Components 1990-98



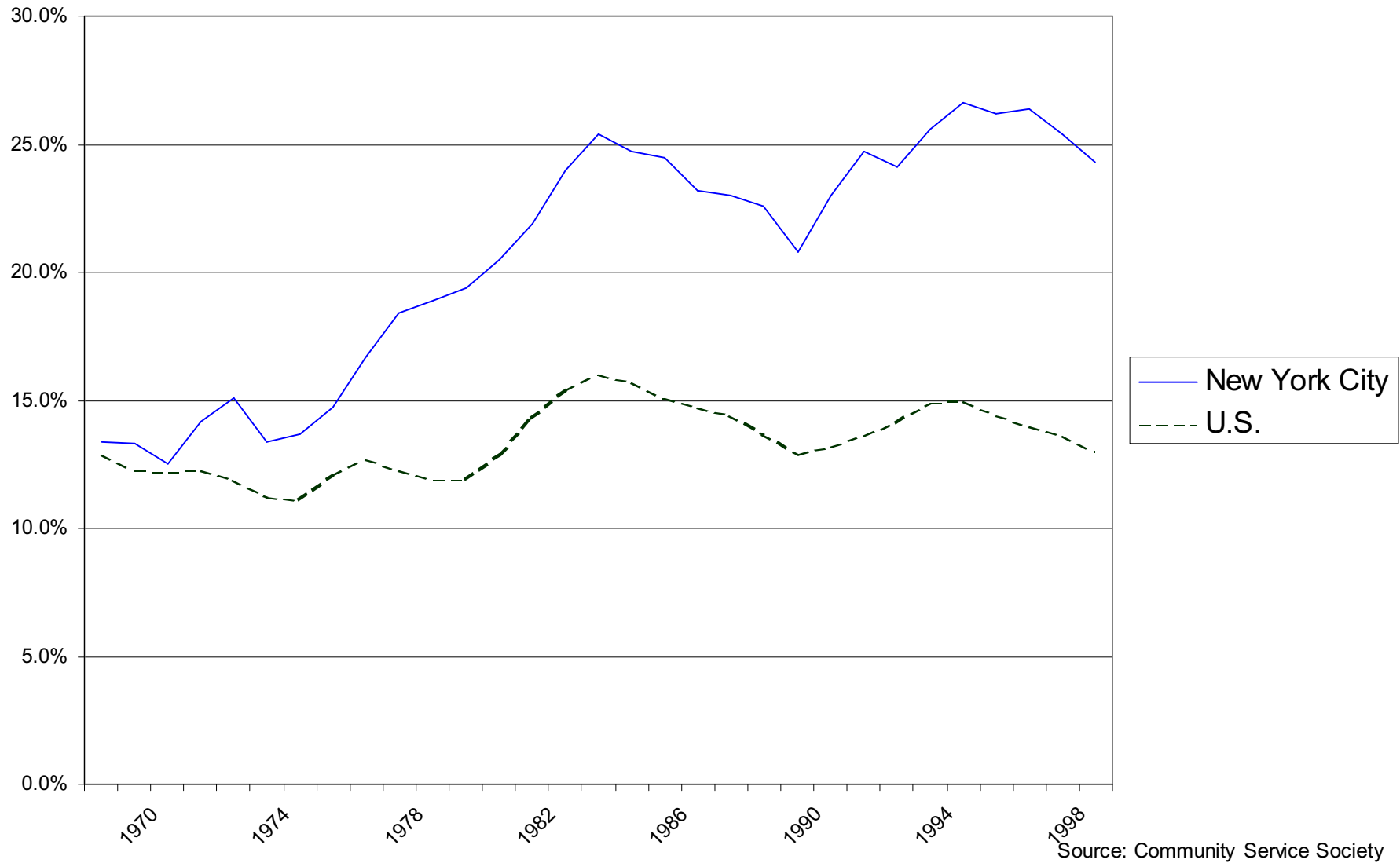
Source: U.S. Census Bureau

Figure 3. Unemployment Rate, New York City and U.S.
January 1978 - June 1999
(seasonally adjusted)



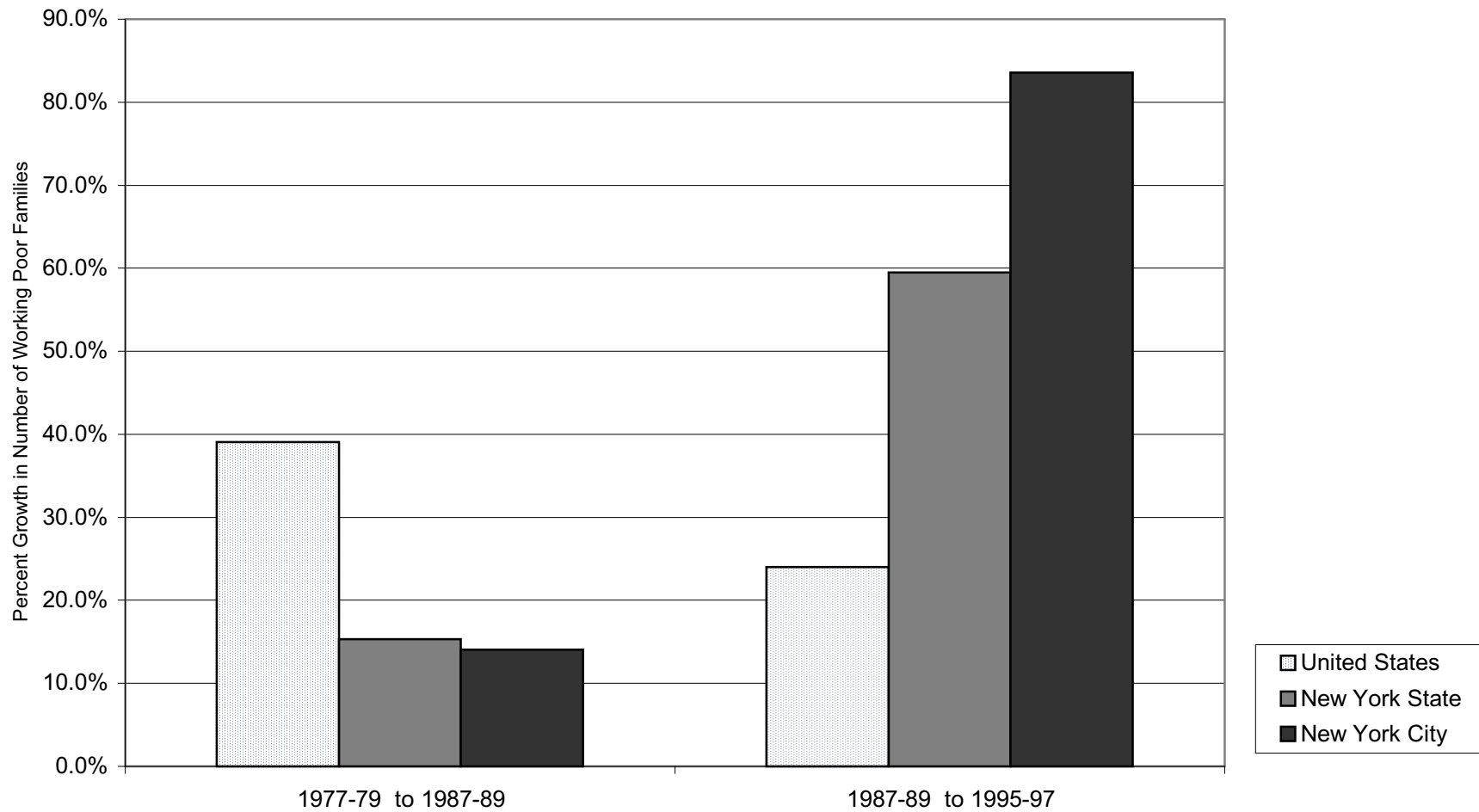
Source: Bureau of Labor Statistics: CPS Household Survey

Figure 4. Percent of Population Below Poverty Level, 1968-98
two year moving average



Source: Community Service Society

**Figure 5. Growth in Number of Working Poor Families
U.S., New York State and New York City**



Source: CPS data analyzed by Center for Budget and Policy Priorities.